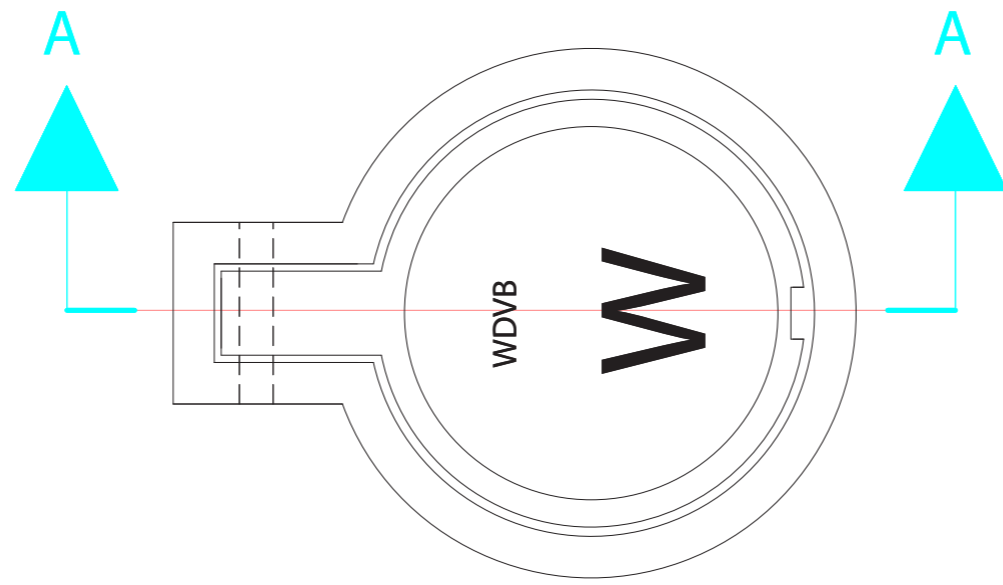


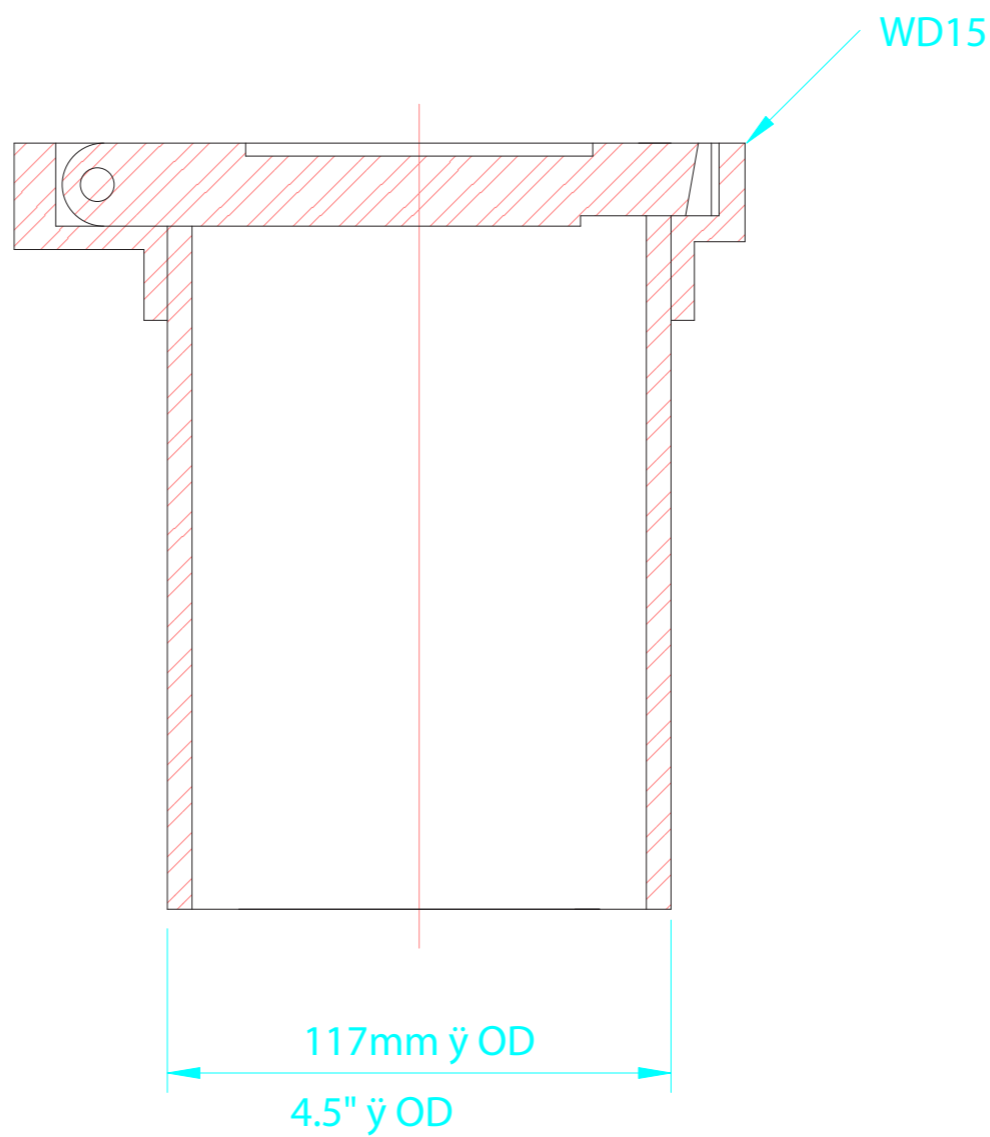
MATERIAL:

- 1) WD15 TOP SOCKET 25mm (1") HINGE
- 2) TOP SOCKETS DUCTILE IRON TO ASTM A536 GR. 65-45-12
- 3) WD19 COVER 25mm (1") HINGE
- 4) COVER GRAY IRON TO ASTM A48 GR. 30B
- 5) BARREL STEEL WELL CASING
- 6) CAN BE SUPPLIED IN ANY LENGTH TO 1.82 M (6')
- 7) TOP SOCKET PINNED & TACK WELDED TO PIPE
- 8) HINGE PIN - STAINLESS STEEL



DIRECTION OF TRAFFIC

PLAN



SECTION A-A

**WD77-4 4.5" OD
VALVE BOX EXTENSION**



**Valve Boxes
Ltd.**

1036 Waverley Street
Winnipeg Manitoba Canada R3T 0P3
P 204 896 1333 F 204 896 6969

APP'D BY:

WDP

DATE:

08/06/02

SCALE:

N.T.S.

REV. NO:

00

DWG. NO:

VBE-3