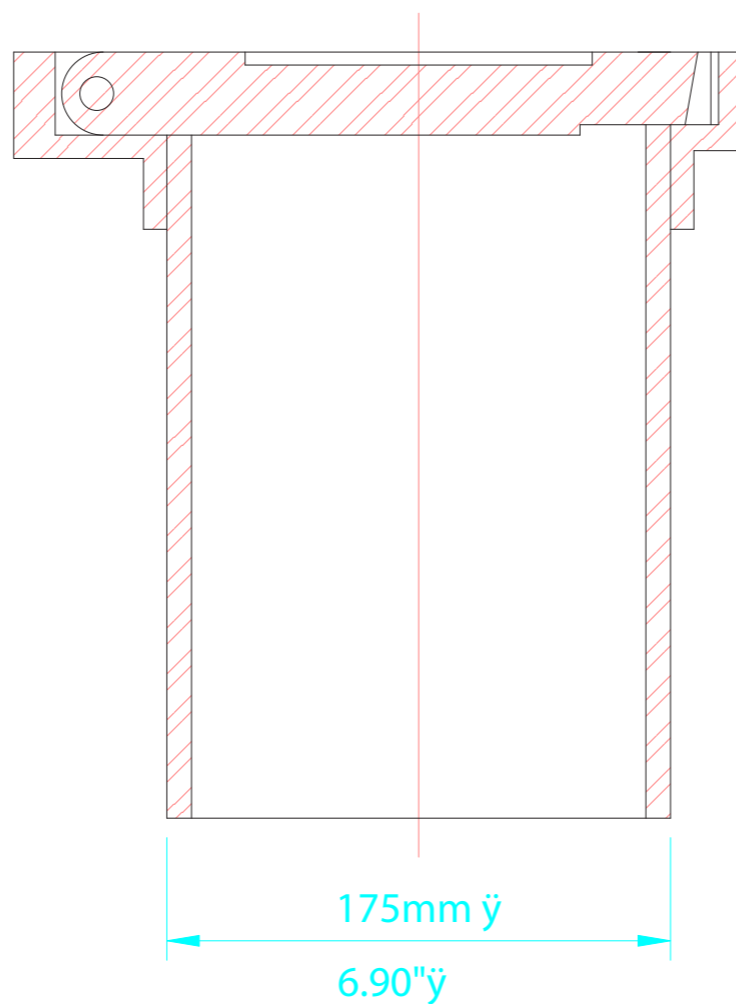
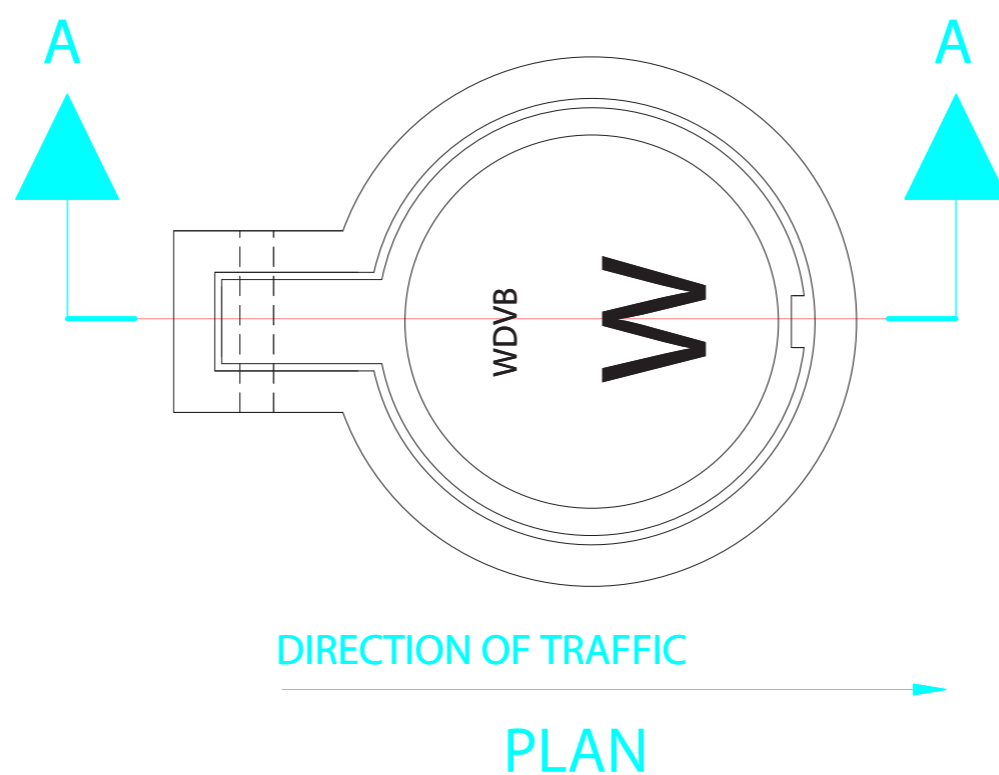


MATERIAL:

- 1) WD12 TOP SOCKET - 32mm (1.25") HINGE
- 2) TOP SOCKET - DUCTILE IRON TO ASTM A536 GR. 65-45-12
- 3) WD39 COVER - 32mm (1.25") HINGE
- 4) COVER - GRAY IRON TO ASTM A48 GR. 30B
- 5) BARREL - DUCTILE IRON TO AWWA C151 GR. 60-42-10
- 6) TOP SOCKET - PINNED TO PIPE BARREL WITH SPRING PIN & TACK WELDED
- 7) STOCK - LENGTH 300mm (12"). OTHER LENGTHS AVAILABLE ON REQUEST
- 8) HINGE PIN - STAINLESS STEEL

FOR USE WITH WD46 VALVE BOXES.



SECTION A-A

**6.90" OD VALVE BOX
EXTENSION**



Valve Boxes
Ltd.
1036 Waverley Street
Winnipeg Manitoba Canada R3T 0P3
P 204 896 1333 F 204 896 6969

APP'D BY:

WDP

DATE:

08/06/02

SCALE:

N.T.S.

REV. NO:

00

DWG. NO:

VBE-2