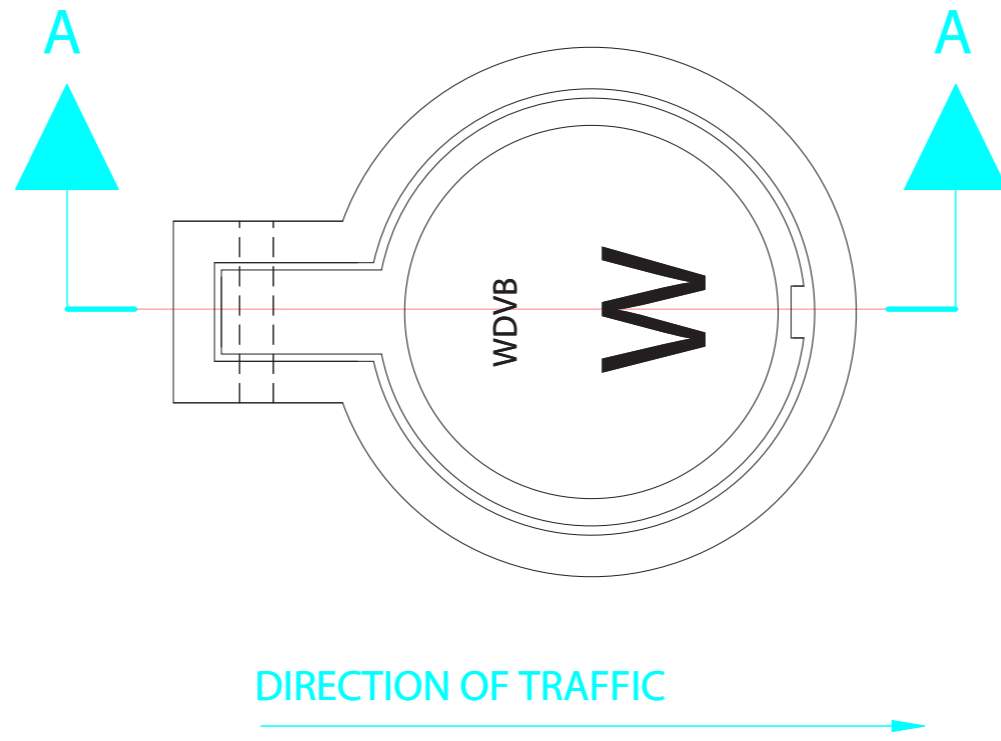


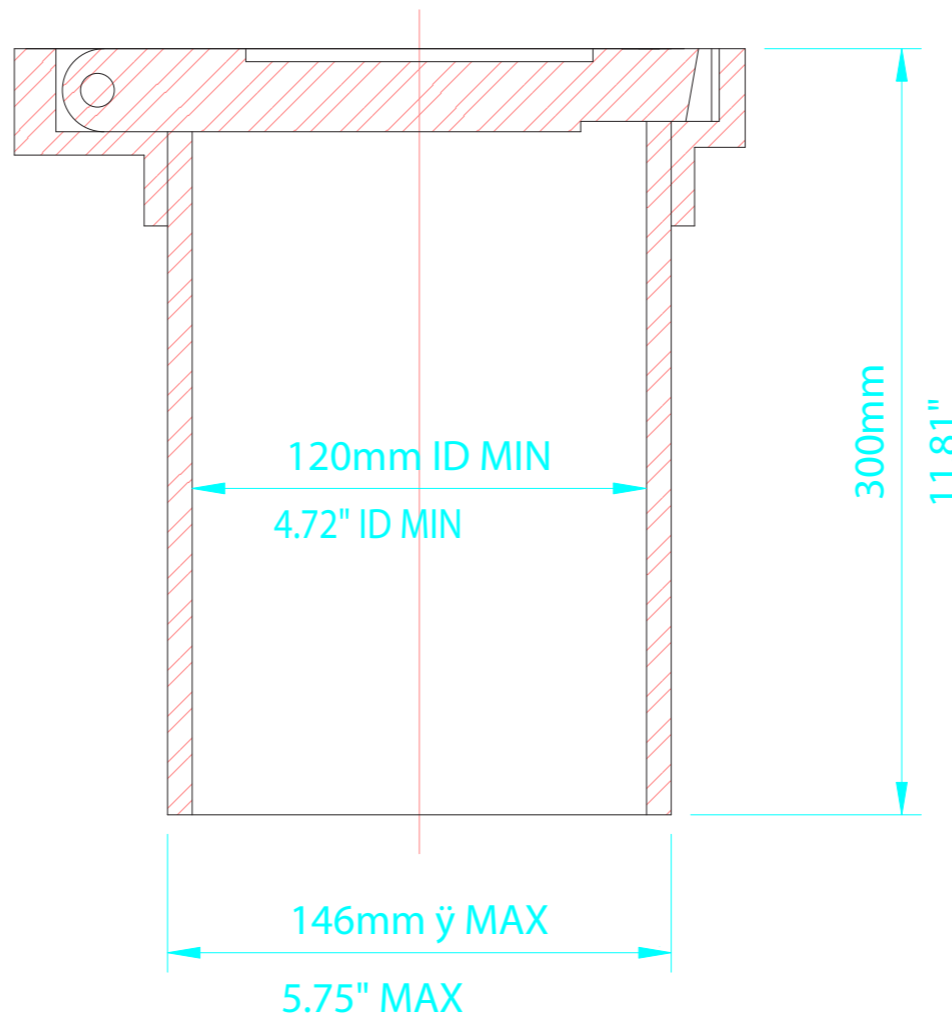
MATERIAL:

- 1) BODY - GRAY IRON ASTM A48 CL. 30B OR DUCTILE IRON ASTM A536 GR. 65-45-12. BODY PART NO. WD4
- 2) COVER - GRAY IRON ASTM A48 CL. 30B COVER PART NO. WD39
- 3) HINGE PIN - STAINLESS STEEL

FOR USE WITH WD46 VALVE BOXES.



PLAN



SECTION A-A

**WD775 5.75" OD
VALVE BOX EXTENSION**



Valve Boxes Ltd.
1036 Waverley Street
Winnipeg Manitoba Canada R3T 0P3
P 204 896 1333 F 204 896 6969

APP'D BY: WDP	DATE: 08/06/02
SCALE: N.T.S.	REV. NO: 00

DWG. NO: **VBE-1**