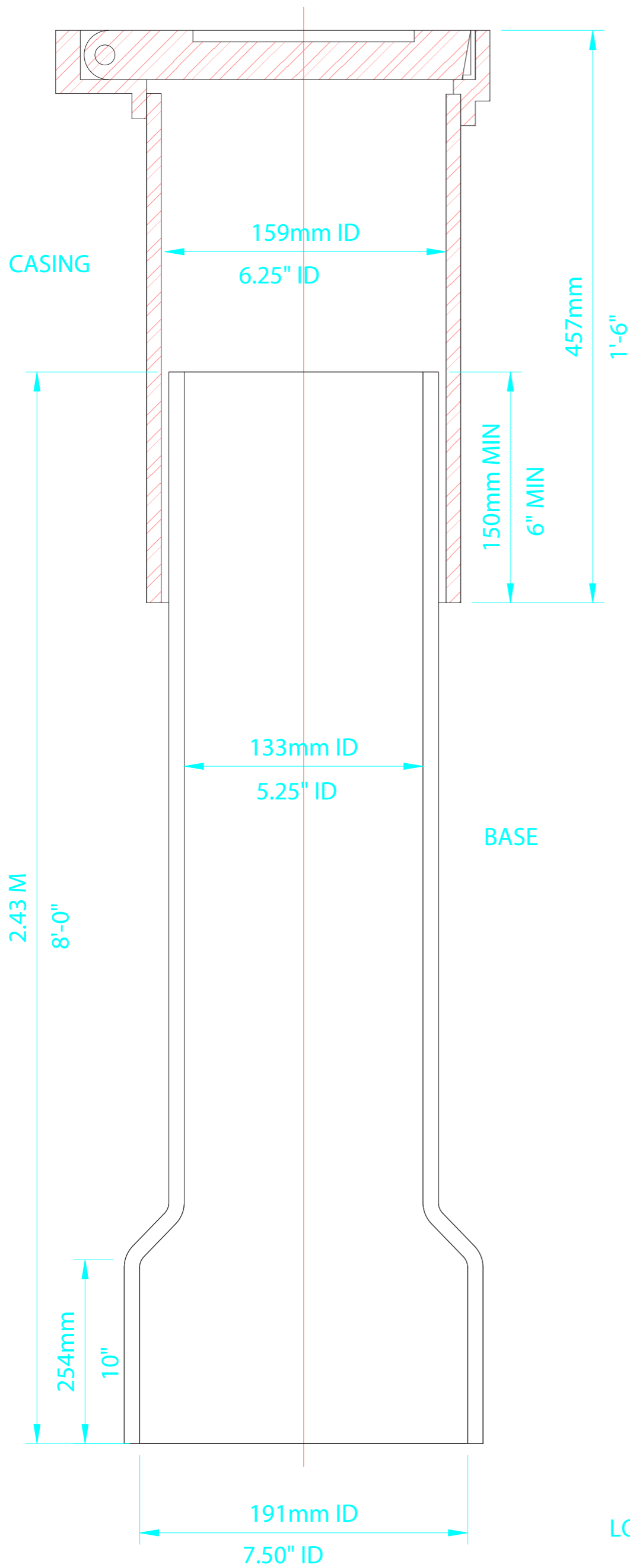
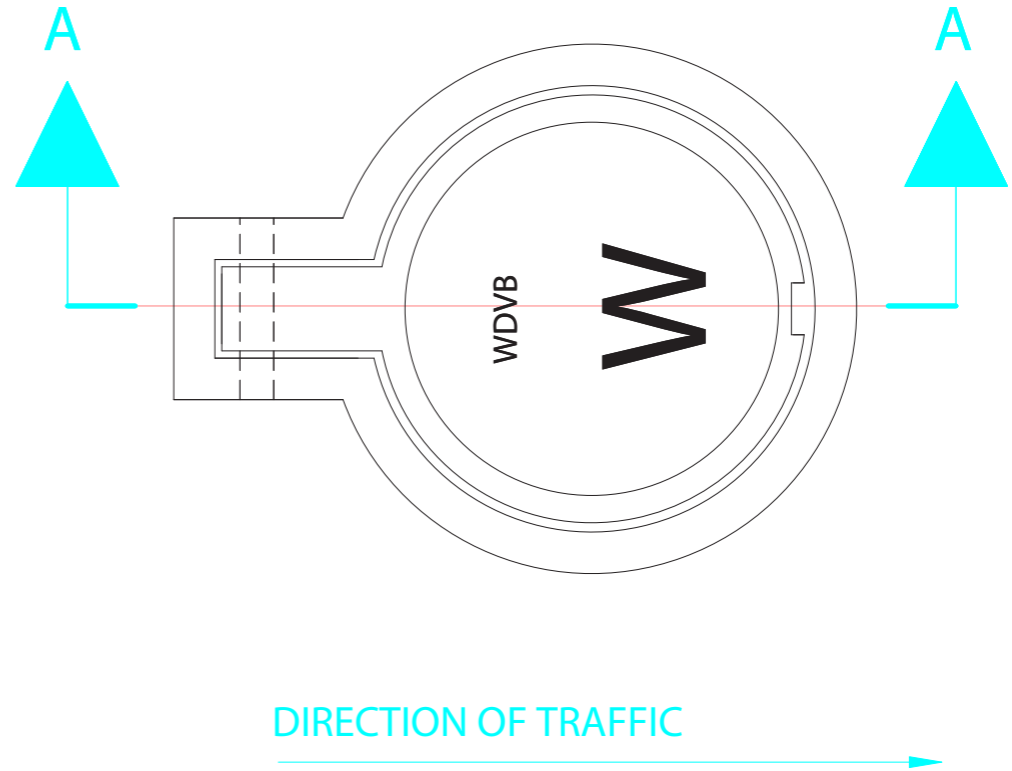


MATERIAL:

- 1) WD39 COVER - GRAY IRON ASTM A48 CL. 30B
- 2) WD12 TOP SOCKET - DUCTILE IRON ASTM A536 GR. 65-45-12
- 3) CASING BARREL - DUCTILE IRON TO ANSI A21.51
- 4) BASE - PVC SDR 21
- 5) ONE PIECE CASING - GRAY IRON ASTM A48 GR. 30B. SEE DWG. VBP-11.
- 6) SPINDLES - SEE DWGS. VBS-2 & VBS-3.



SECTION A-A



PLAN

VALVE \bar{y} (mm)	MAX. BURY
100	2.95
150	3.00
200	3.15
250	3.27
300	3.40

LONGER LENGTHS AVAILABLE ON REQUEST.

APPROVED BY THE MANITOBA WATER SERVICES BOARD.

**WD82
VALVE BOX**



Valve Boxes
Ltd.
1036 Waverley Street
Winnipeg Manitoba Canada R3T 0P3
P 204 896 1333 F 204 896 6969

APP'D BY: WDP	DATE: 08/06/02
SCALE: N.T.S.	REV. NO: 00
DWG. NO: VB-3	