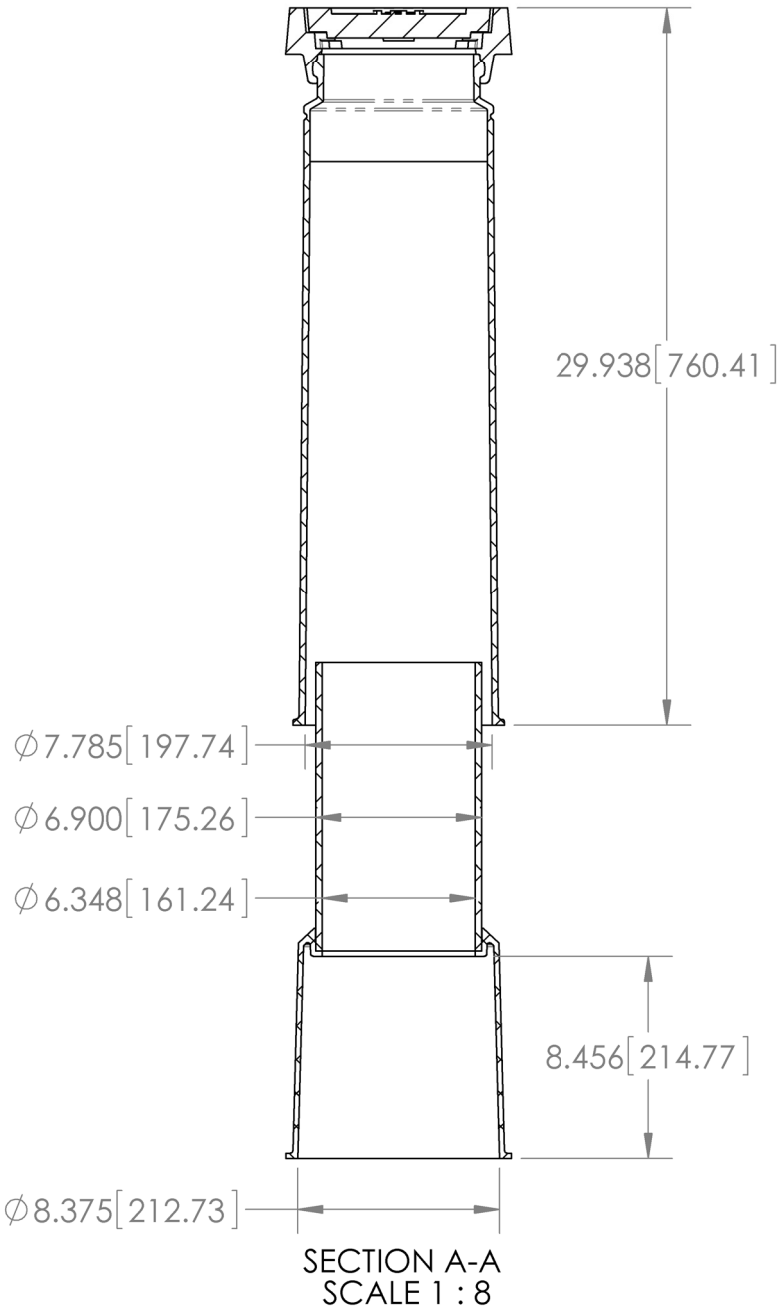
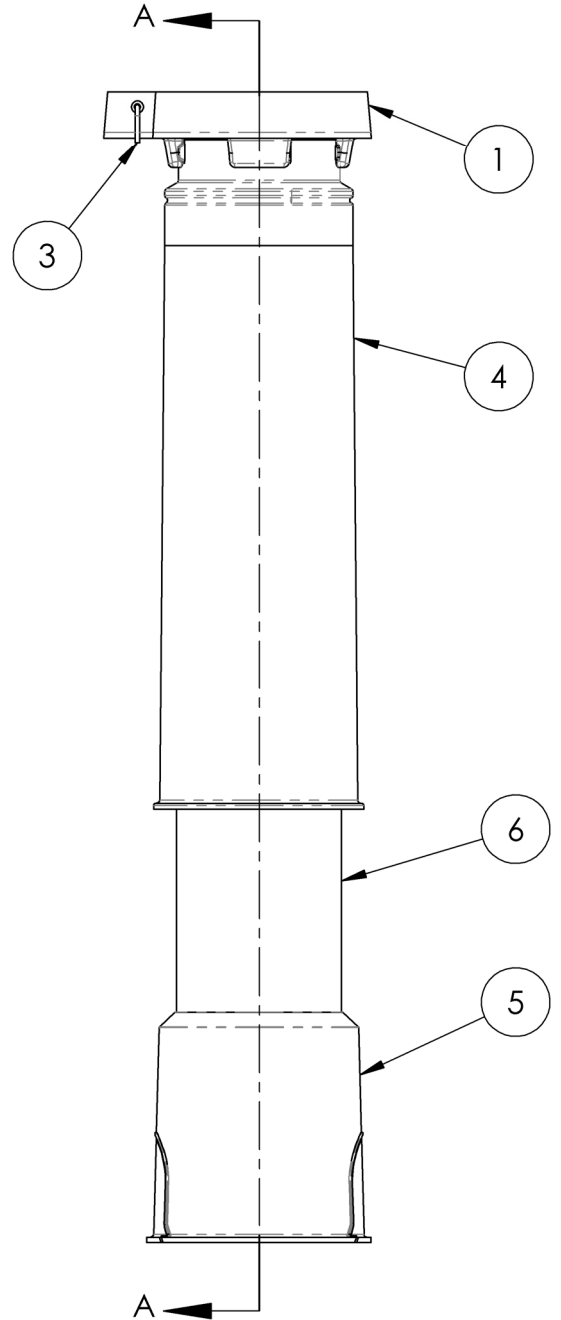
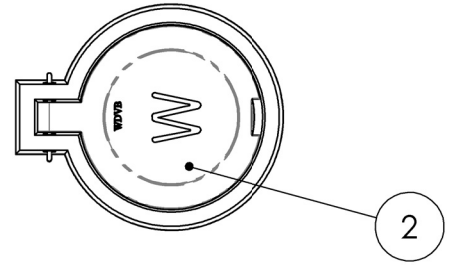


ITEM NO.	PART NO.	DESCRIPTION	MATERIAL
1	WD89	TOP SOCKET	ASTM A536 65-45-12 DUCTILE IRON
2	WD39-W	VALVE BOX COVER	ASTM A536 65-45-12 DUCTILE IRON
3	SSHP-1	HINGE PIN	AISI 304
4	PI-7	PI 7" UPPER CASING BARREL	WD PRO-IRON 25 PE
5	VBB-6	6" NOM VALVE BOOT	ABS
6	BRP6-X	BASE RISER PIPE	C900 DR25 PVC



REV.	DESCRIPTION	APPROVED	DATE	SCALE	SHEET
0	ISSUED FOR REVIEW		DEC 30/11	1:8	1 OF 1

NAME	DATE
DRAWN MB	DEC 30/11
CHECKED	
TOLERANCES UNLESS SPECIFIED	
FRACTIONAL	± 1/32"
TWO PLACE DECIMAL	± .02"
THREE PLACE DECIMAL	± .002"
ANGULAR	± 1°
INCHES	
SIZE	DWG. NO.
A	WD46 PI Valve Box
REV.	0



1036 Waverly Street
Winnipeg, Manitoba, Canada R3T 0P3
P 204 896 1333 F 204 896 6969